



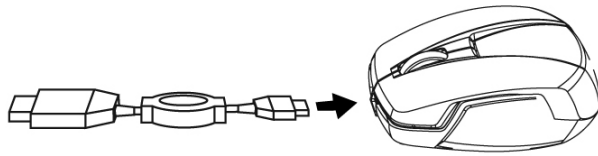
# E-BLUE

## ReChargeable Cordless Mouse

### 簡易操作指南 Quick Guide

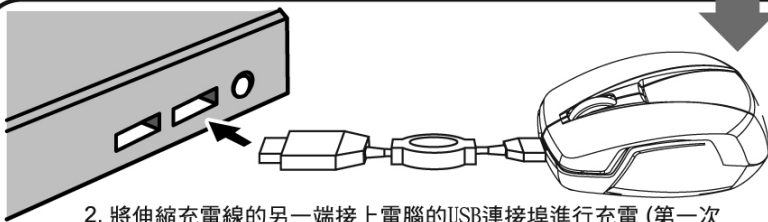


**1**



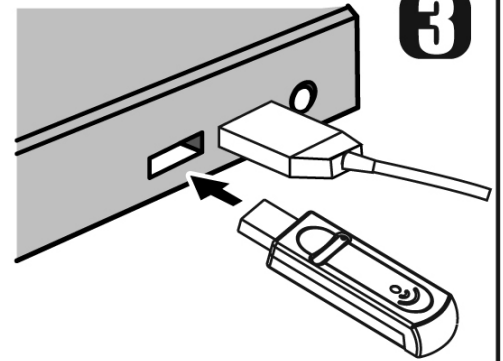
1. 將滑鼠與伸縮充電線接上  
connect the mouse with the retractable recharging cable.

**2**



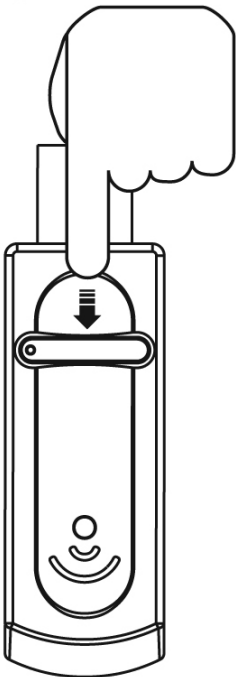
2. 將伸縮充電線的另一端接上電腦的USB連接埠進行充電 (第一次充電需10小時, 往後充電為3小時) 完成後, 取走充電線  
connect the other side of the retractable recharging cable to the PC USB port for charging (10 hours for the first charging, 3 hours is needed afterward). Take away the cable when finished charging.

**3**



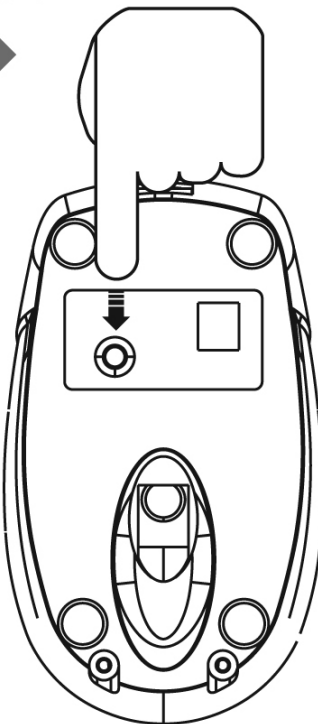
3. 將接收器接上USB連接埠  
plug in the receiver to the PC USB port.

**4**



4. 按接收器的連線按鈕一次  
press the connection button on the receiver.

**5**



5. 按滑鼠底部的連線按鈕一次  
press the connection button at the bottom of the mouse

**6**

6. 完成  
Completed

#### \*備註:

- 充電後備用時間為21天, 以每天使用3小時為計算單位, 連續使用時間為70小時
- 當滑鼠的感應器不停閃動, 代表電池量不足
- 滑鼠使用內置鋰電池, 不需安裝任何電源
- 滑鼠停止工作3分鐘, 便會自動進行睡眠狀態, 重新啟動請按左或右鍵
- 需要即時進入睡眠狀態, 按住滑鼠連線按鈕, 直至紅色光源關閉才放手

#### Remarks

- Standby time is 21 days after fully charged (3 hours per day); or 70 hours for continuously use.
- The LED of the sensor blinks when the there is low battery
- Built-in Li battery is used, installation of battery or power supply is not needed
- Sleeping mode will activate automatically after 3 minutes stop operation. Press left or right button to re-activate the mouse.
- If you need to activate the sleeping mode, press and hold the connection button until the red LED shut off.